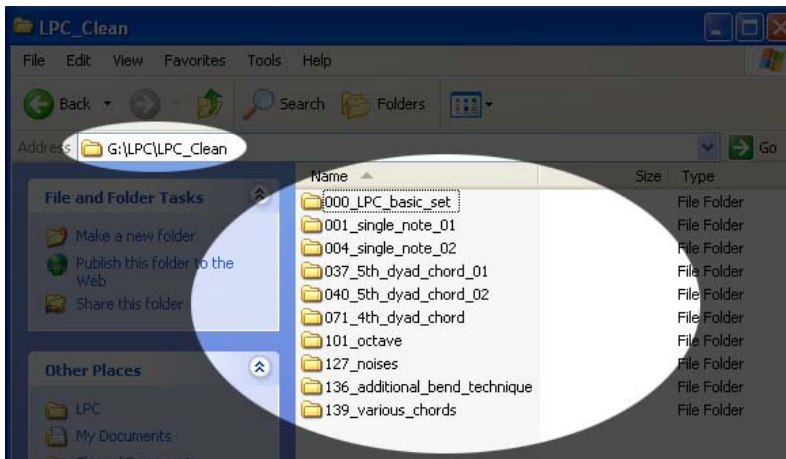


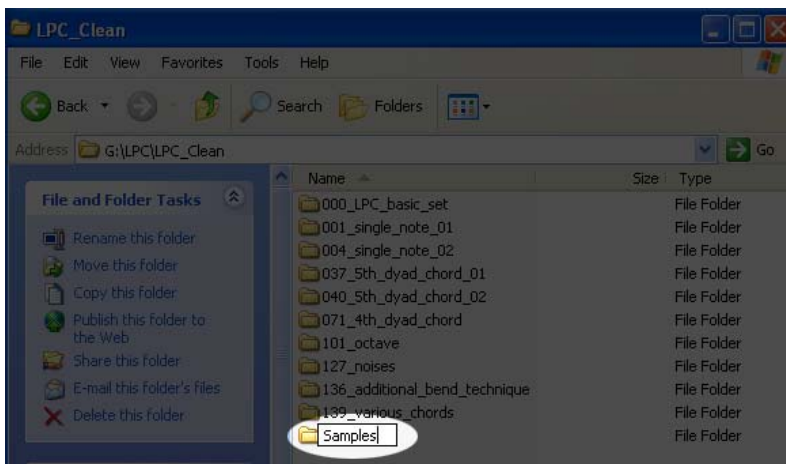
How to update

1. Open the folder that LPC has been installed.

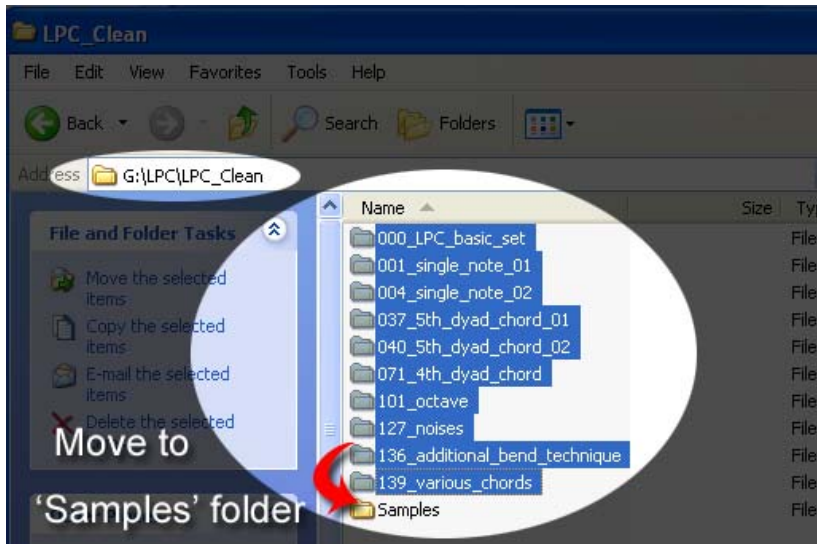


(There are total 10 folders.)

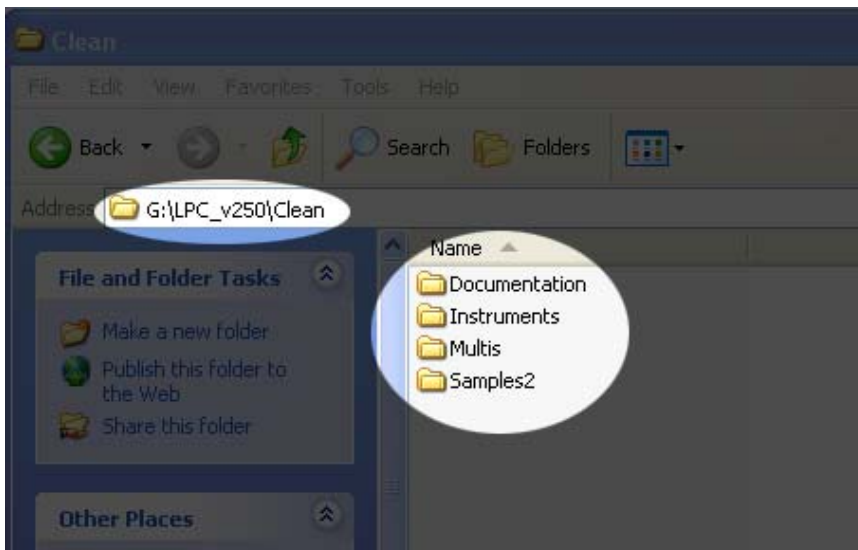
2. Create a folder and name it 'Samples'.



3. Move all the folders to the 'Samples' folder.

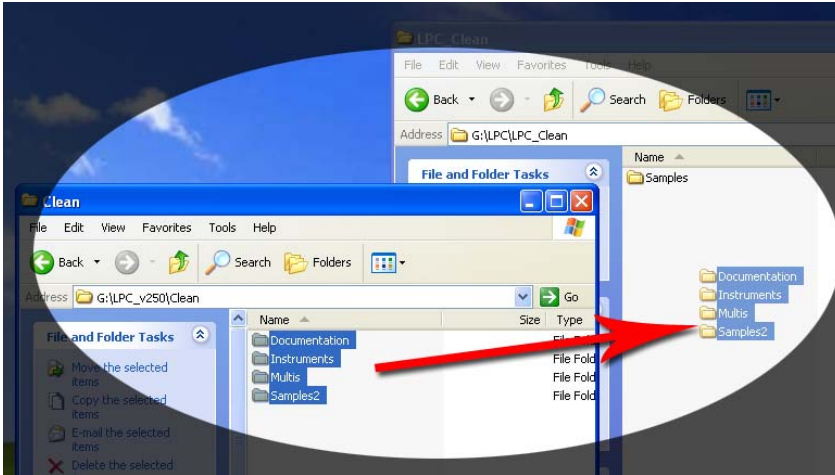


4. Unzip the update file; 'LPC_v250.zip' and open the folder; 'Clean' (or "Distortion"; if you update the distortion version) in the 'LPC_v250' folder.

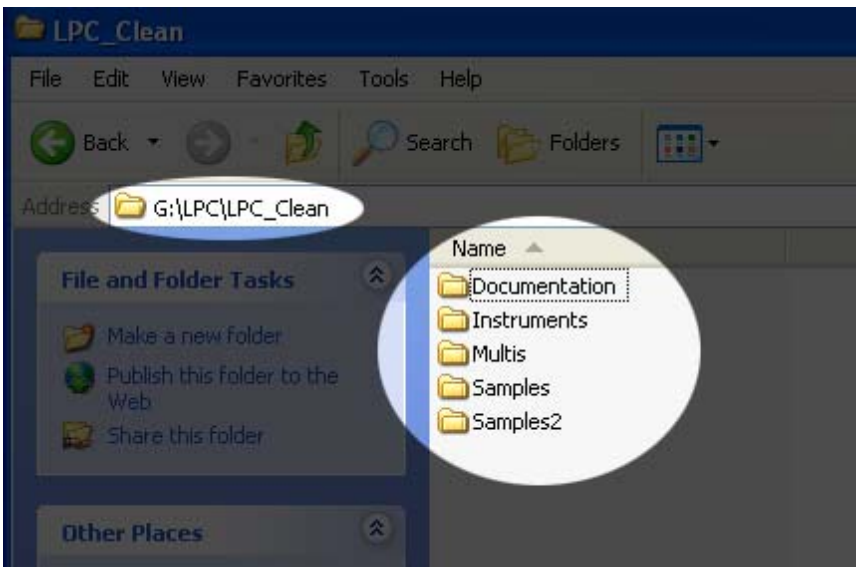


(There are total four folders.)

5. Move all the four folders in the 'Clean' folder to the folder that LPC has been installed. (In this case, the 'LPC_Clean' folder.)



After moving the folders, the content in the folder looks like this;



Now you can load the .nki files in the 'Instruments' folder and the .nkm files in the 'Multis' folder into Kontakt.



URL: <http://prominy.com>

Email: info@prominy.com