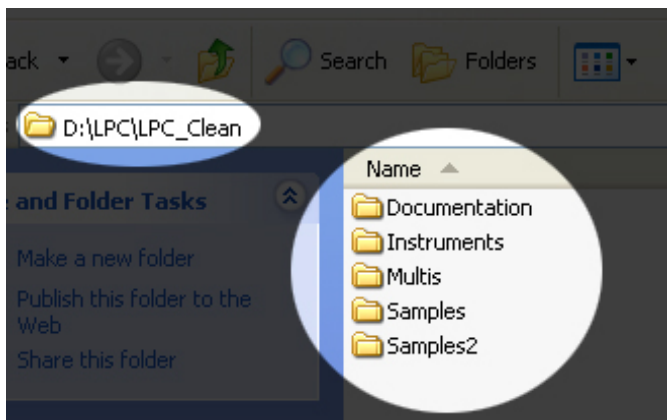


How to apply LPC LE patch

[IMPORTANT]

- LPC v.250 needs to be applied before using the LPC LE patch.
 - LPC LE requires Kontakt 3.5.
 - Please follow the instruction below. Moving the files to a wrong location causes an error with loading the files into Kontakt / Kore.
-

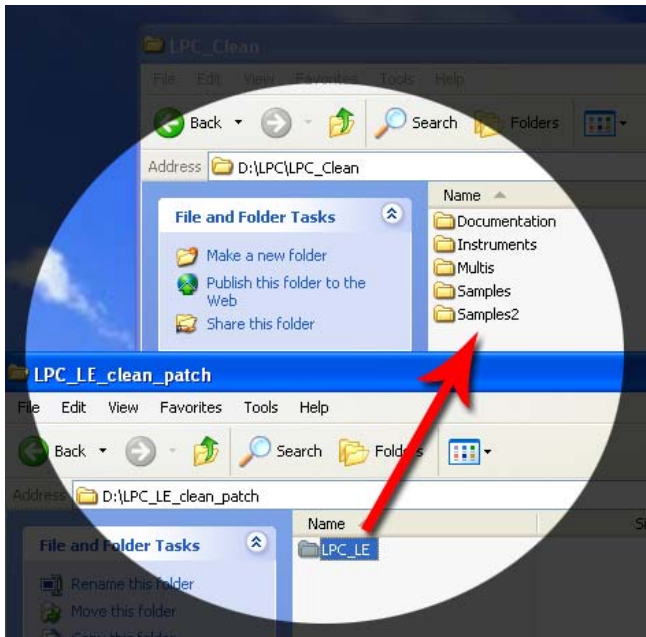
1. Open the folder that LPC has been installed.



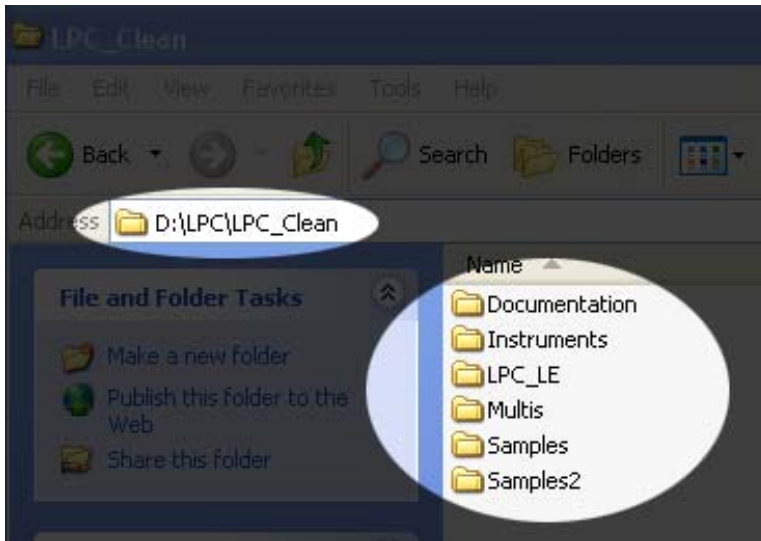
(There are total 5 folders.)

2. Unzip the update file; 'LPC_LE_clean_patch.zip' (or LPC_LE_distortion_patch.zip if you apply the patch to LPC Distortion) and open the folder.

3. Move the LPC_LE folder to the folder that LPC has been installed.



After moving the folders, the content in the folder looks like this;



Now you can load the files in the LPC_LE folder into Kontakt3.5 / Kore2.



URL: <http://prominy.com>

Email: info@prominy.com